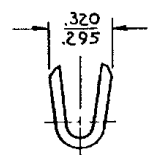
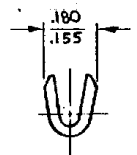
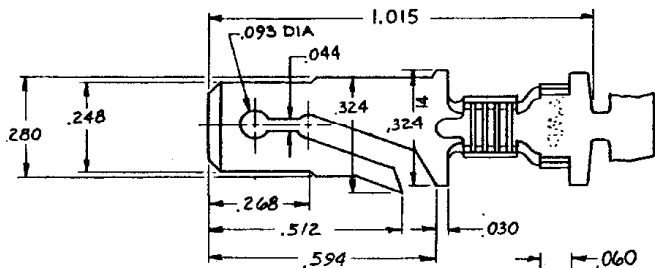
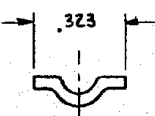
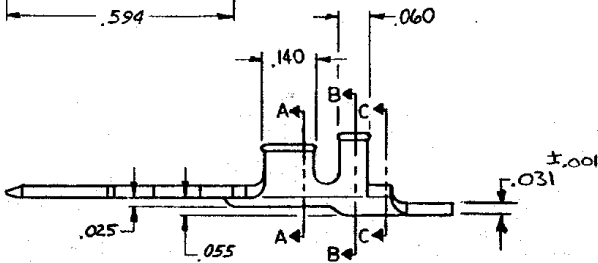


REV	DESCRIPTION	DATE	DWN	APVD
J1	REVISED PER ECR-14-015005	04NOV2014	NK	DH



SECTION A-A

SECTION B-B



SECTION C-C

FOR INTERNAL PROCESSING USE

641256-3	NICKEL	.100-.142	18-14 AWG	640416-3
	TIN	.100-.142	18-14 AWG	640416-4
641256-1	NONE	.100-.142	18-14 AWG	640416-2
LOOSE PIECE	FINISH	INSULATION RANGE	WIRE SIZE	PART NO
UNLESS OTHERWISE SPECIFIED DIMENSIONS ARE IN INCHES. TOLERANCES ON: DECIMALS ±.015 ANGLES		CONTRACT NO DR <i>S. J. West 6/22/77</i> CHK <i>J. C. Steidle 7/12/77</i> APPD <i>new force 7/12/77</i> APPD DESG APPD OTHER APPD		
MATERIAL <b>BRASS</b>		<b>STE</b> TE Connectivity "250" BLADE		
FINISH SEE TABLE	SIZE <b>B</b>	CODE IDENT NO <b>00779</b>	DRAWING NO <b>C-640416</b>	REV <b>J1</b>
SCALE		1 OF 1		